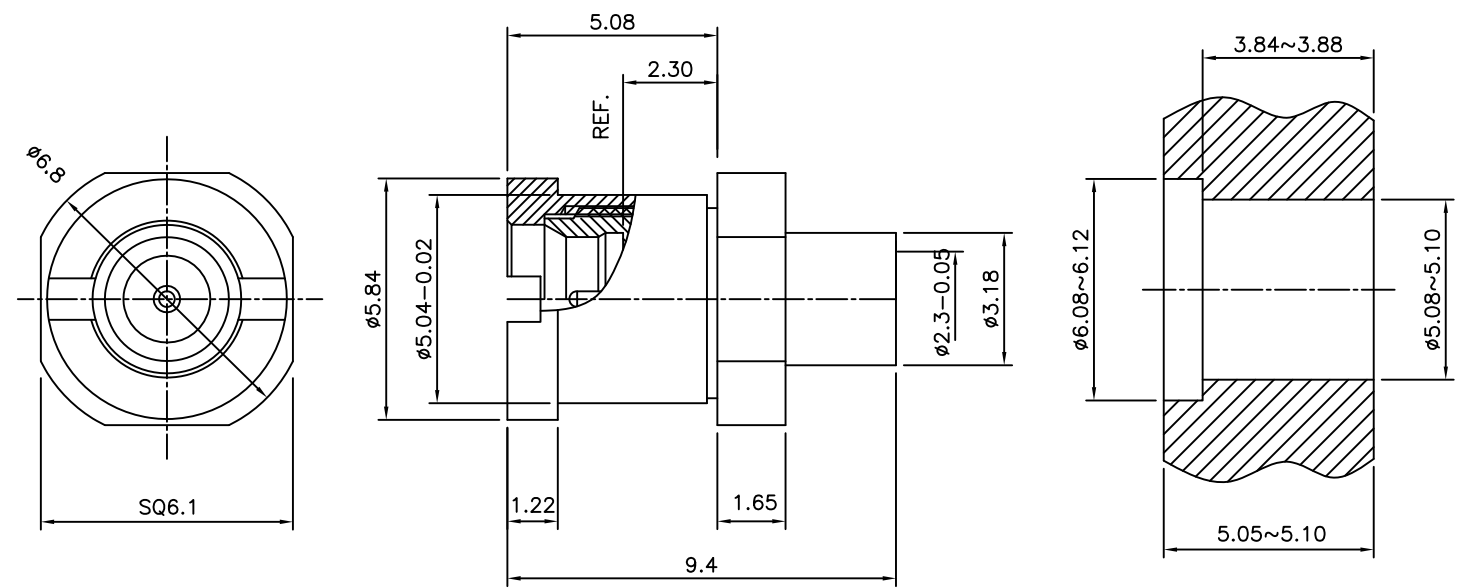


4	No.	Revision	Date	Name
	△			
	△			

RoHS Compliant



RECOMMENDED MOUNT HOLE

ELECTRICAL PERFORMANCE:
 NOMINAL IMPEDANCE: 50 OHm
 FREQUENCY RANGE: DC-12GHz
 R.F INSERTION LOSS: 0.1dB Max to 12GHz
 VSWR: 1.25:1 Max to 12GHz

SMP Bulkhead Mount MALE
 for SR085(Full Detent)

Item	Materials	Plating
Shroud	Stainless steel	Passivated
Body	Stainless steel	Gold Plated
Center contact	Beryllium copper	Gold Plated
Insulator	PTFE	-

CUSTOMER

NO.	DESCRIPTION	Q'TY	MATERIAL	FINISH	REMARKS.
PARTS No.	SMP-401-001	NAME	SMP-BH MALE085		APPROVED
MATERIAL	FINISH	TOLERANCES OTHERWISE SPEC. ±0.05		ANGLES ±1°	CHECKED
SCALE		UNIT	mm		DESIGNED S.J.LEE
DONGJIN TI.		DWG NO.	SMP-401-001		DATE. 15/MAY/2012